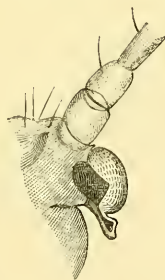


XVII. *Note on Siphonophora Artocarpi, Westw.* (Trans. Ent. Soc. Lond., 1890, p. 649). By Prof. JOHN O. WESTWOOD, M.A., F.L.S., &c.

[Read July 1st, 1891.]

I AM indebted to Mr. E. Ernest Green, the discoverer of this species in Ceylon, for the following notice of a remarkable structure, which I must have overlooked in my examination of the specimens which he had been good enough to supply me with, and of which I do not recollect another instance. In a note from that gentleman, dated 20th August, 1891, is the following passage:—"With reference to the aphid of the bread-fruit tree, I draw your attention to the lobe or appendage at the hinder angle of the compound eye. This seems to be part and parcel of the eye, though the facets on this part are larger, more irregular, and disconnected from those on the main part. The appendage contains pigment, which is in direct connection with the pigment of the main portion. I have noticed a similar appendage in more or less degrees in several other species of Aphid in Ceylon."



I may be permitted to add that in fig. 1 of my Plate XXI. the very characteristic second branchlet of the post-costal vein is hardly sufficiently curved beyond its centre, and the honey-secreting tubes are even longer in the younger state of the larvæ than in their more advanced state.